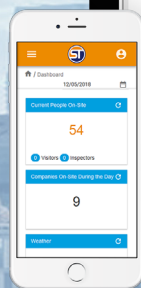




SITE TRAXX

Collect.
Verify.
Analyze.
ROI.



REAL-TIME CONSTRUCTION ANALYTICS

COLLECT • VERIFY • ANALYZE

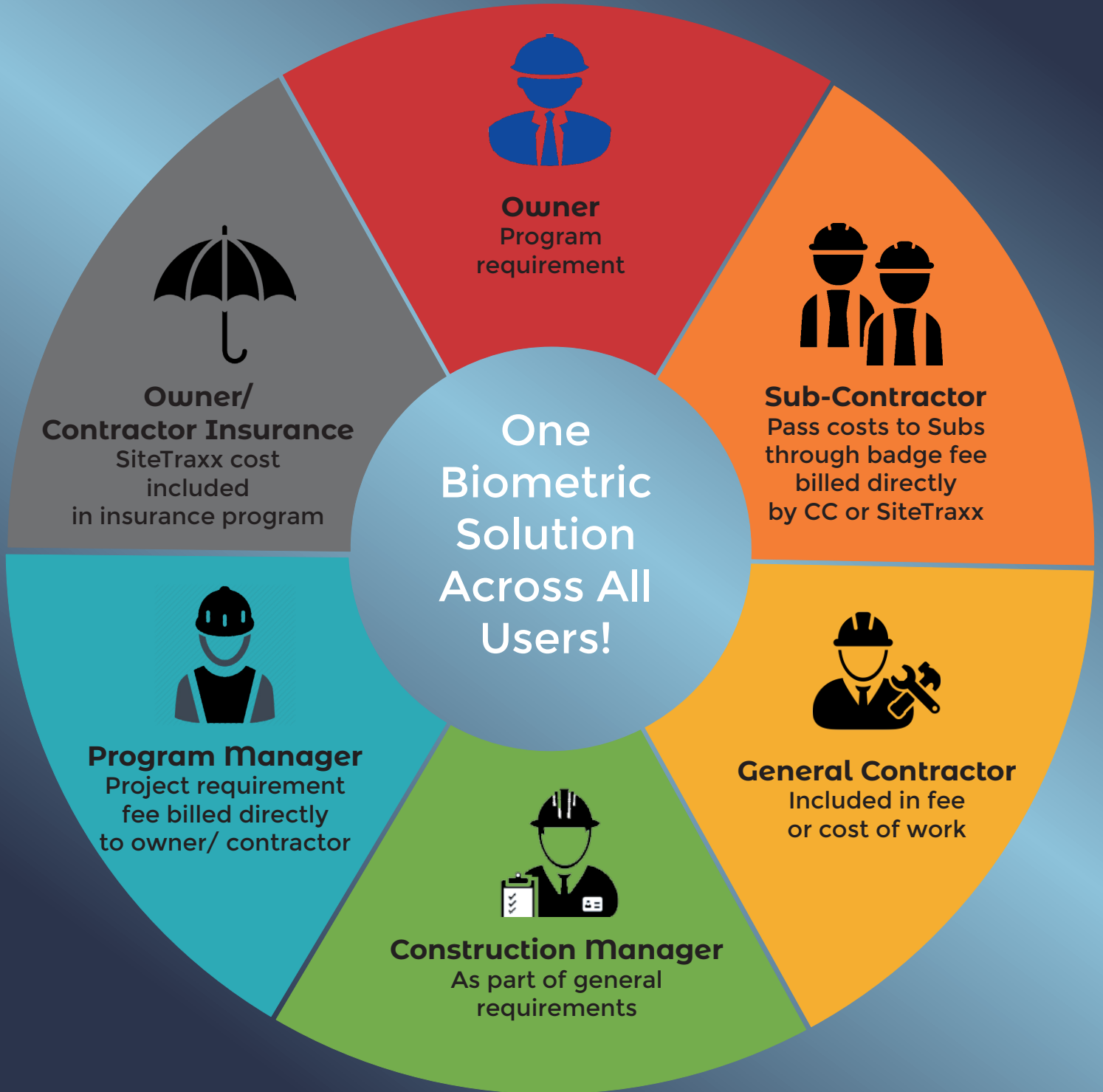


Construction relies on the validity and organization of information. SiteTraxx combats the ever-changing nature of **jobsite data collection** with a proprietary hardware solution seamlessly integrated with a custom, robust **software solution tailored to construction projects' unique needs**. SiteTraxx incorporates user friendly software and onsite kiosks to eliminate the inevitable human error that plagues jobsite collection of time sensitive data. Quality data combined with robust reporting and data analytics, *SiteTraxx is the construction industries' top choice* for all project stakeholders.

Hardware + Software + SiteTraxx = Project Success

info@SiteTraxx.com • 866.985.8504

SITE TRAXX Beneficial Users



Programs that work for YOU

What our Customers are Saying



“My team had a situation that acceleration was going to be required with a subcontractor due to late materials furnished by others a week before completion. The initial request for overtime was over \$200k but with SiteTraxx we were not only able to manage the required overtime but validate the hours and associated cost each day. The result was the subcontractor delivered the work on time and the associated costs were around \$100k, not \$200k as the subcontractor initially requested.”

- Holden Hsiao, VP West Region, Shaw Lundquist

SiteTraxx focuses on partnering with our clients to promote both businesses



SHAW-LUNDQUIST ASSOCIATES INC

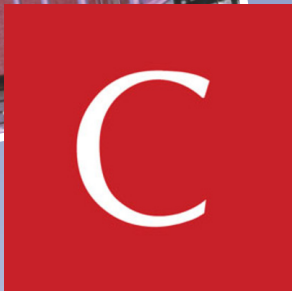


- “I appreciate the single database of all workers knowing that I can determine if a person is authorized to be onsite “
- “The injury question allows me to manage our OCIP risk on a daily basis by worker. “
- “I look for extended work hours by each worker knowing that this increases the risk of accidents or injury”
- “SiteTraxx drives site security for both our ground up projects and occupied facilities.”

- *Dara Lesmeister, Safety Manager, Caesars Entertainment*



CAESARS
ENTERTAINMENT®



“ On SiteTraxx - obviously the ability to keep better reigns on complex, multifaceted, GMP styled contracts is the top benefit. The ability to true up the hours to much closer to actual, to have the real time data to manpower counts and immediate staffing updates is huge benefit to both owner and contractors, and then also if the projects are repeated, whether the exact same or same type of animal - the data behind a full project from start to finish can be extremely valuable. It can truly be looked at by labor, materials, GC’s and GR’s - even if labor hours are backed out of Stip sum subcontracted labor. It is a great pre-audit reconciler, that minimizes arguments and contractual gray areas. I think as your project and client list grows, the data sets - even generalized will be a great sales and forecasting tool to market and expand. “

- *Matthew McGovern, Project Director, Cumming*

- “I can validate the actual manpower onsite with my phone.”
- “No more debating with subcontractors regarding manpower and overtime request.”
- “Allows me to manage authorization of overtime in the field.”
- “Validate the number of workers on-site in real time.”
- “Validate the crew dynamics in real time. How many journeymen, laborers, supervisors, safety personnel? “
- “Days worked on-site.”

- *Jeff Holland, Superintendent, BECK*



POINTS YOU CAN'T DISAGREE WITH!





SITE TRAXX

Construction Reporting and Analytics

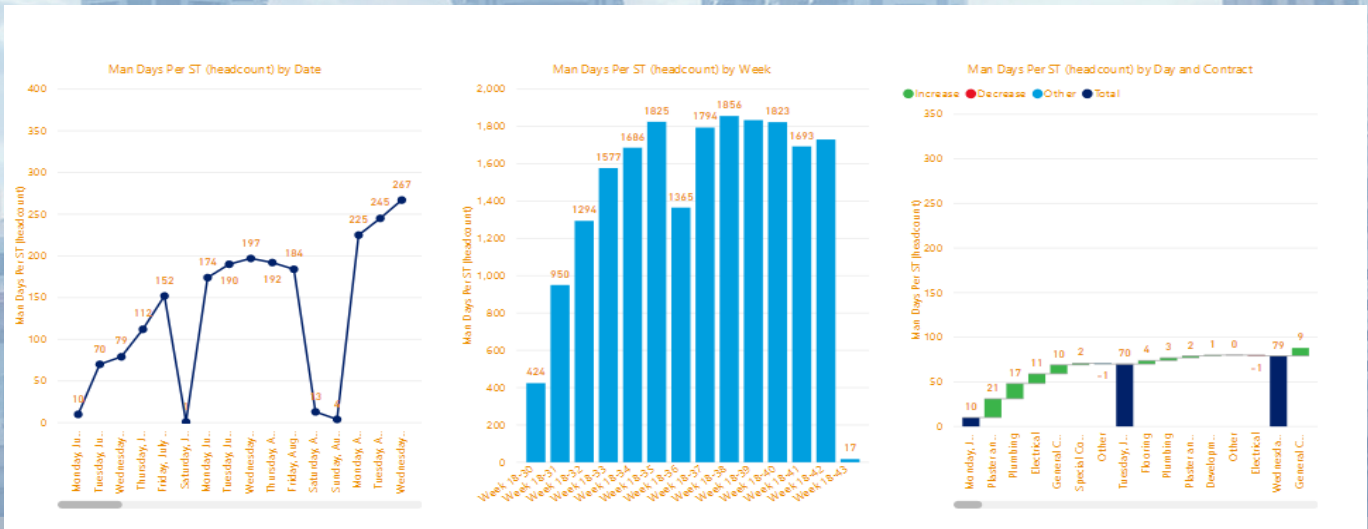
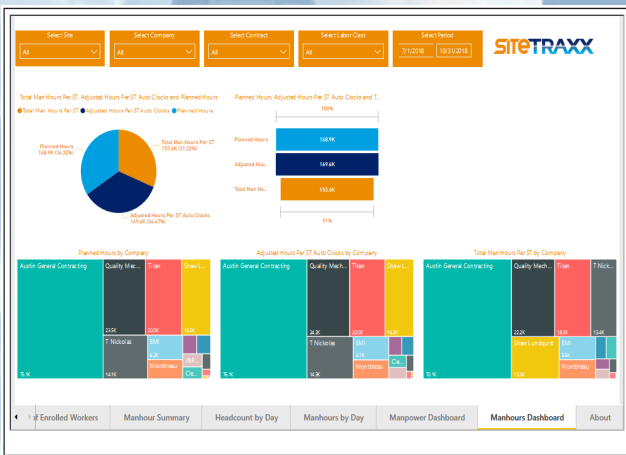
Collect.
Verify.
Analyze.

PO Box 720641
Dallas, TX 75372
866.985.8504
info@SiteTraxx.com
www.SiteTraxx.com

For more Information:

Chris Wolbrink
214.632.2224
chris.wolbrink@SiteTraxx.com

Jerry Moore
918.706.7025
jerry.moore@SiteTraxx.com



WWW.SITETRAXX.COM